



Willingale Road, Loughton, IG10

BUTLER  STAG



Step inside this inviting family home and be welcomed into a bright open-plan lounge and dining area perfect for entertaining or enjoying family mealtimes together. The layout makes it easy to keep an eye on the children while relaxing with a coffee or watching your favourite programme.



Freehold

- Semi Detached Family Home
- Four Bedrooms
- Spacious Lounge
- Hereward Primary and Debden Park High School Catchments
- Off Street Parking

To the rear, the spacious conservatory provides a versatile additional living area, ideal as a playroom or a quiet spot to enjoy the garden views all year round – whatever the weather.

Upstairs, you'll find well-proportioned bedrooms throughout, ensuring no one has to compromise on space. The delightful loft room on the second floor adds even more flexibility, whether used as a bedroom, office, or hobby space.

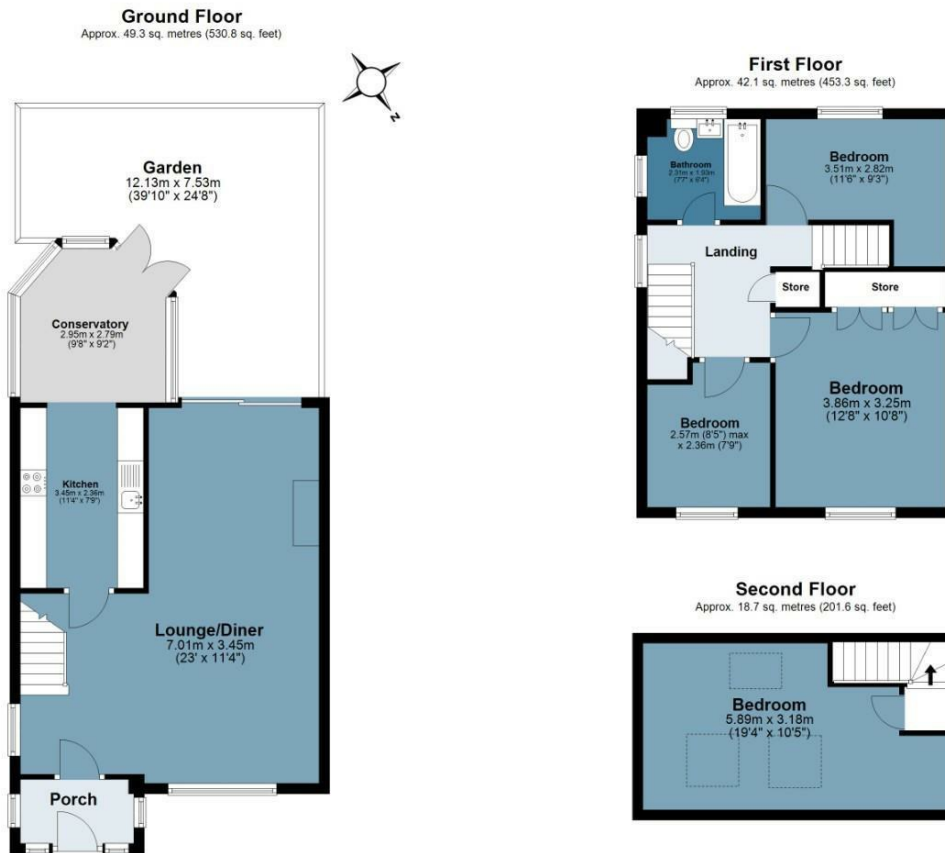
Outside, the front of the property has been attractively paved, with the potential to create off-street parking (subject to the necessary consents). The rear garden offers a private space for the whole family to enjoy.

Situated in a sought-after location, this home is just a short walk from local shops and the station, making daily life convenient for the whole family.

This property truly combines comfort, space, and location – everything you need in a modern family home.







Total area: approx. 110.2 sq. metres (1185.7 sq. feet)

All measurements have been taken as a guide to prospective buyers only and are not precise. This plan is for illustrative purposes only and no responsibility for any error, omission or misstatement. The services, systems and appliances shown have not been tested and no guarantee as to their operability or efficiency can be given. Measurements may have been taken from the widest area and may include wardrobe/cupboard space. No guarantee is given to any measurements including total areas. Buyers are advised to take their own measurements.

© @moderphoto.uk | www.moderphoto.co.uk
Plan produced using PlanUp.

Willingale Road

BUTLER & STAG

☎ 01992 667666

🏠 4 Forest Drive, Theydon Bois, Essex, CM16 7EY

✉ theydon@butlerandstag.com

www.butlerandstag.uk

IMPORTANT NOTICE - These particulars have been prepared in good faith and they are not intended to constitute part of an offer or contract. We have not performed a structural survey on this property and the services, appliances and specific fittings have not been tested. All photographs, measurements, floor plans and distances referred to are given as a guide and should not be relied upon.